

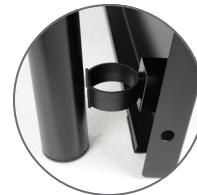
100% Steel Support
Welded frame; heavy-gauge cross wires; tubular legs; supports up to 1,200 lbs.



Easy Assembly
Tools supplied for assembly



Retainer Lip
Increased lip around edges secures mattress



Side Panels
Snap-on paneling provides a sleek look

Goliath Base

BEDDING SUPPORT

EXTRA STORAGE – increased height for storage under bed (*surface to floor 15 3/4"*)

COMBINATION – foundation and bed frame in one

CONSTRUCTION – 100% steel throughout

EASY – easy assembly and setup

SIDE PANELS – optional side panels offer a traditional bed base look



Goliath Base

- 460074 – Twin XL
- 460070 – Full XL
- 460071 – Queen
- 460073 – King
- 460072 – Hotel King
- 460101 – Cal King



Goliath Side Panels (set of 3)*

- 460075 – Full XL
- 460076 – Queen
- 460078 – King
- 460077 – Hotel King
- 406102 – Cal King

*Goliath side panels set includes two side panels and one end panel sold separately from base



Customer Service:

Mike Kelley/Mary Freeman 800-935-4702
mike@freemankelley.com • mary@freemankelley.com